



# JOIN THE REPAIR REVOLUTION: EMPOWERING INDIVIDUALS IN THE CIRCULAR ECONOMY

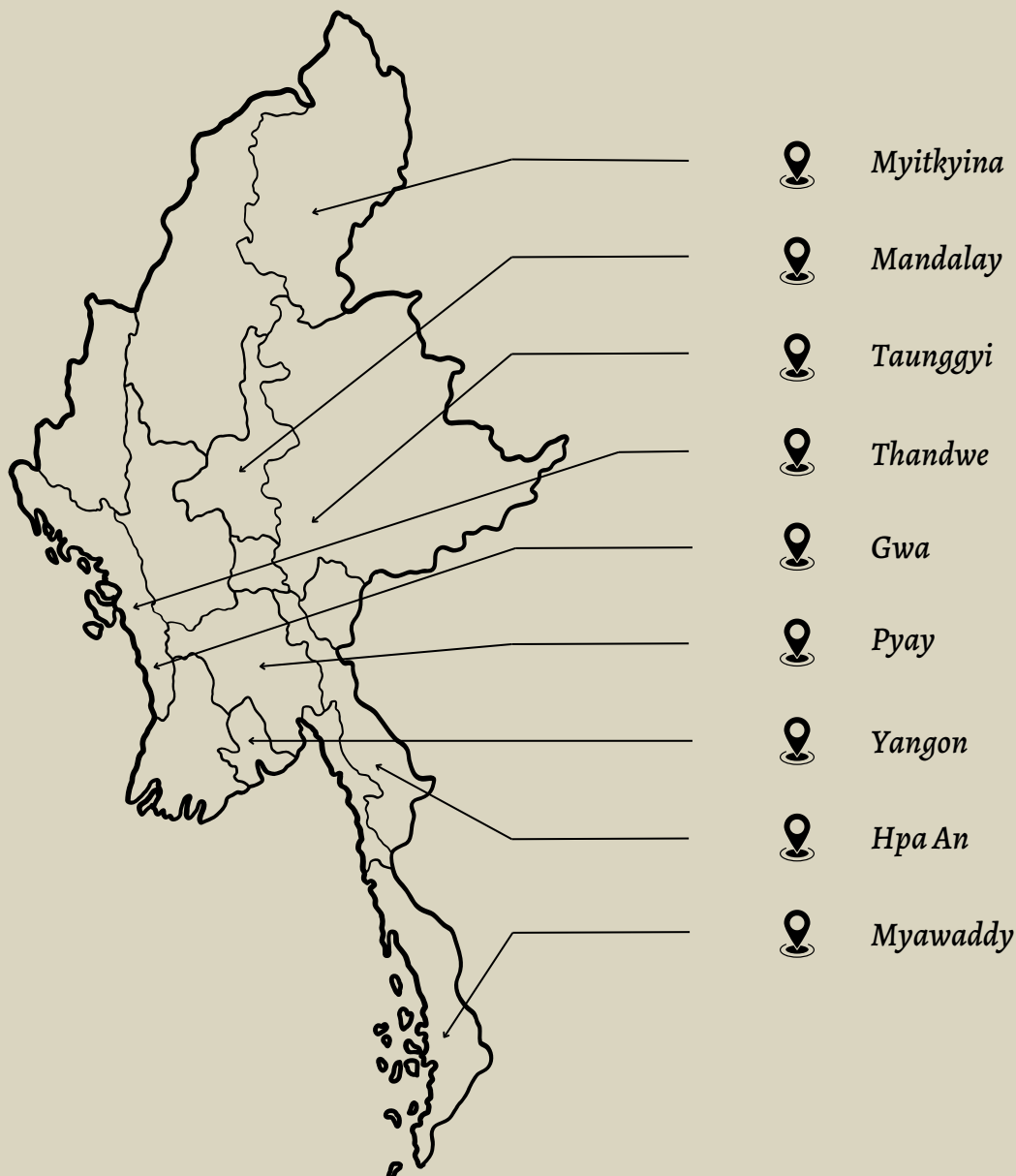
Comprehensive Map of Local Repair and Secondhand Shops

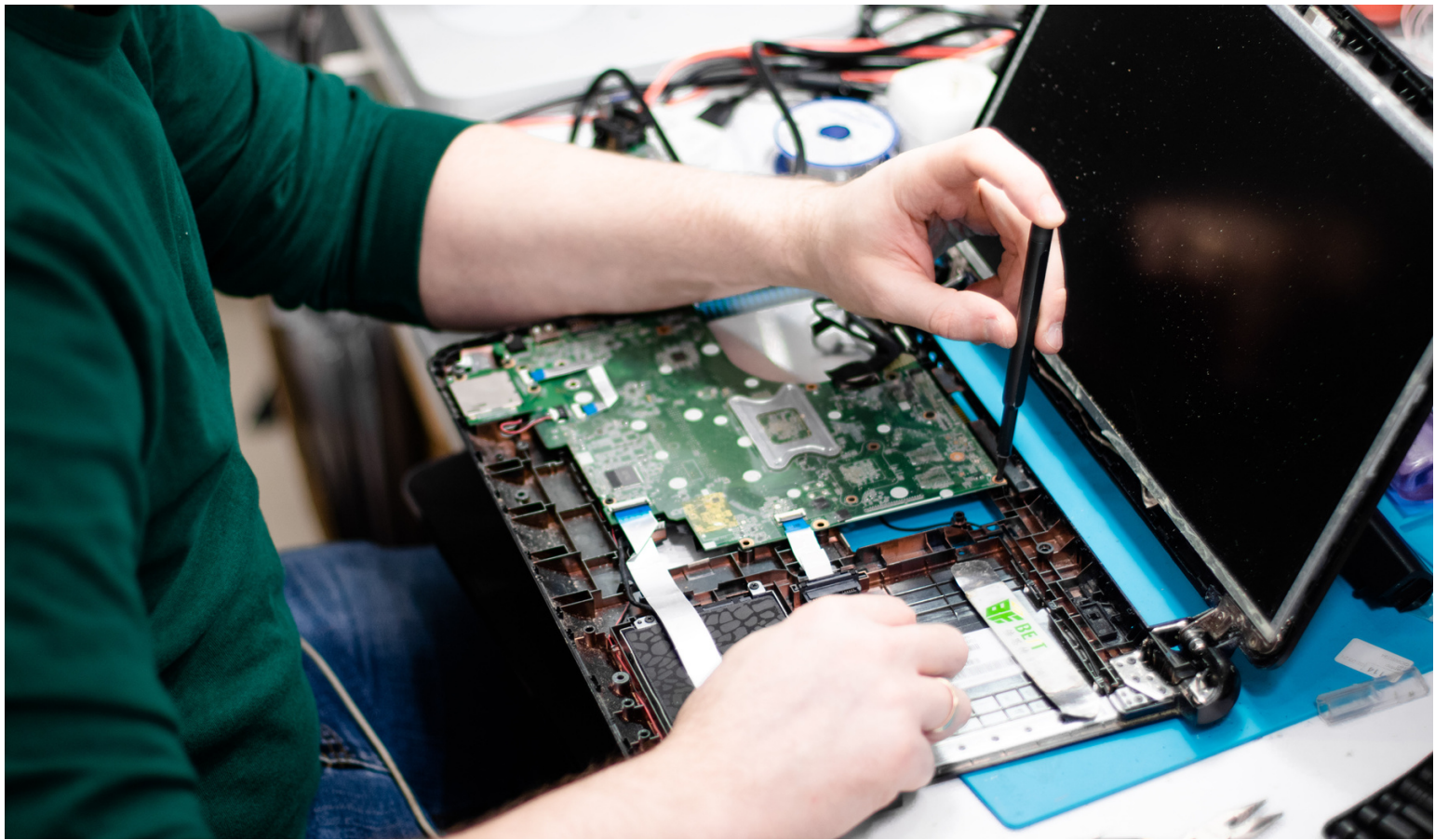
by Prevent Plastics & Thant Myanmar



# Map Description

The Google Private Map supports circular economy support for Green Businesses and Activities and is an interactive tool designed to help organisations and individuals easily locate and connect with eco-friendly businesses and activities in their area. By utilising this map, users can discover a wide range of green solutions that can help them reduce their carbon and waste footprint, from repair and reuse shops to eco-tourism destinations. The map is user-friendly and easy to navigate, providing detailed information on each green business or activity, such as location, hours of operation, and services offered. Users can also filter their search results by category, including sustainable fashion, restaurants, electronic, hotels and more. Whether you are a business owner looking to green your supply chain, or an individual seeking to live a more sustainable lifestyle, the Google Private Map for Green Businesses and Activities has something for everyone. By supporting green businesses and activities, we can all do our part to create a more sustainable future for generations to come.





# Role of Repair

In a circular economy, repair plays a crucial role in reducing waste and preserving resources. Repair is the process of fixing and restoring products to their original condition or extending their lifespan, rather than throwing them away and buying new ones. By repairing products, we keep them in use, reducing the need for new resources to be extracted, processed, and manufactured.

Repair supports the circular economy by promoting a closed-loop system where resources are kept in use for as long as possible. It helps to minimize waste by reducing the amount of discarded products that end up in landfills or incinerators. Additionally, repair can help to create jobs and economic opportunities by establishing repair and refurbishment businesses.

Furthermore, repairing products instead of replacing them can also save consumers money in the long run, as repairing a product is often cheaper than buying a new one. It also encourages consumers to be more conscious of their purchasing decisions, considering the longevity and reparability of a product before buying.

In summary, repair is an essential component of the circular economy, as it reduces waste, preserves resources, creates jobs, and saves money for both consumers and businesses.



# Restaurants, Accommodation & Catering

Restaurants, accommodation, and catering play a critical role in the circular economy by implementing sustainable practices that reduce waste and promote resource efficiency.

Restaurants can reduce waste by implementing practices such as composting food scraps and using reusable containers instead of disposable ones. They can also support the circular economy by sourcing ingredients from local farmers, reducing transportation emissions and promoting local businesses. In addition, some restaurants have started to adopt the concept of the "closed-loop kitchen," which involves using food waste as a resource to create new dishes or ingredients, thus reducing waste and preserving resources.

Accommodation providers, such as hotels and lodges, can also adopt sustainable practices that contribute to the circular economy. For example, they can reduce water and energy consumption by installing low-flow showerheads, LED lighting, and efficient heating and cooling systems. They can also implement waste reduction strategies such as recycling, composting, and reducing food waste. Additionally, they can support local businesses by sourcing materials and services from nearby suppliers. Catering services can also play a role in the circular economy by adopting sustainable practices such as using reusable plates, cutlery, and glasses instead of disposable ones. They can also reduce waste by planning and ordering food carefully to avoid overproduction and food waste. Additionally, they can support local farmers and businesses by sourcing ingredients locally, reducing transportation emissions and promoting local economic development.

Overall, by implementing sustainable practices and supporting local businesses, restaurants, accommodation providers, and catering services can contribute to the circular economy by reducing waste, preserving resources, and creating economic opportunities.



# Thrifting & Slow fashion

Thrift clothing and cloth repair play a crucial role in the circular economy by extending the lifespan of clothing and reducing waste.

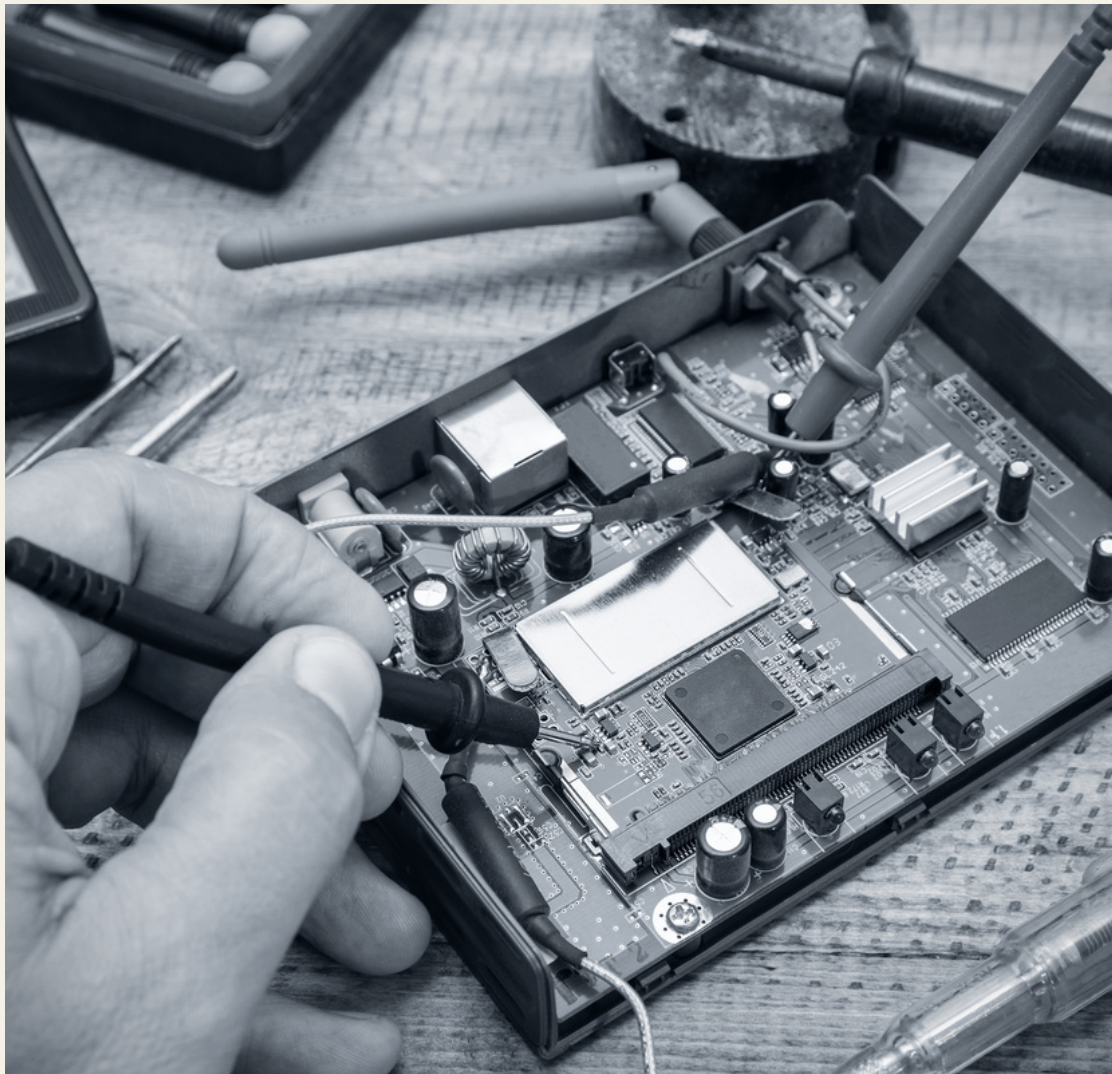
Thrift clothing bags provide a sustainable alternative to traditional retail shopping, as they offer secondhand clothing at a lower cost. By purchasing secondhand clothing, consumers reduce the demand for new clothes to be produced, thereby reducing the need for new resources to be extracted and processed. Additionally, thrift clothing bags divert clothing from landfills, reducing the amount of textile waste.

Cloth repair also supports the circular economy by extending the lifespan of clothing. Repairing garments instead of discarding them reduces waste and preserves resources. It also provides consumers with an opportunity to learn how to repair and maintain their clothes, encouraging a more sustainable approach to fashion consumption.

By promoting thrift clothing bags and cloth repair, we can reduce the environmental impact of the fashion industry, which is known for its high levels of waste and resource consumption. Additionally, by extending the lifespan of clothing, we can reduce the need for new clothes to be produced, thus preserving resources and reducing greenhouse gas emissions associated with the production and transportation of new garments.

Overall, thrift clothing bags and cloth repair are essential components of the circular economy, as they reduce waste, preserve resources, and encourage sustainable fashion consumption.





# Electronic Repair

Electronic repair plays a crucial role in the circular economy by extending the lifespan of electronic devices and reducing electronic waste.

Electronic devices such as smartphones, laptops, and appliances are typically discarded when they break or become obsolete. This results in a significant amount of electronic waste, which can be harmful to the environment and human health. By repairing electronic devices instead of discarding them, we can reduce electronic waste and preserve resources.

Electronic repair also supports the circular economy by creating job opportunities and promoting local economic development. Repair technicians require specialized skills and training, and by supporting electronic repair businesses, we can create jobs and support local economies.

In addition, electronic repair can also help consumers save money. Repairing electronic devices is often cheaper than purchasing new ones, and it encourages consumers to be more mindful of their consumption patterns and the lifespan of their electronics.

Furthermore, electronic repair can help to reduce the environmental impact of electronic manufacturing. By extending the lifespan of electronic devices, we reduce the demand for new devices to be produced, which can help to reduce the environmental impact associated with electronic manufacturing, such as resource extraction and energy consumption.

In summary, electronic repair is an essential component of the circular economy as it reduces electronic waste, preserves resources, creates jobs, supports local economic development, and helps consumers save money.

**Shoe Umbrella Key** repair can be an important aspect of circular economy, which is focused on reducing waste and maximizing the lifespan of products. The following are some ways in which shoe umbrella key repair can fit into the circular economy:

1. **Repair:** Instead of discarding a broken shoe, umbrella or key, it can be repaired and reused, thereby extending its lifespan and reducing waste. Repairing also requires less resources than producing new items.
2. **Reuse:** If the shoe, umbrella or key is still in good condition, it can be reused by another person who needs it. This helps to reduce the demand for new products, thereby minimizing the need for resources and energy to produce them.
3. **Refurbish:** If the shoe, umbrella or key is no longer functional or appealing, it can be refurbished to give it a new life. For example, an old umbrella can be repaired and repurposed into a parasol, or a shoe can be repurposed into a plant holder.
4. **Recycle:** If the shoe, umbrella or key is beyond repair or refurbishment, it can be recycled. The materials can be extracted and used to produce new products, minimizing the need for new resources.

In summary, **shoe umbrella key** repair is a crucial aspect of circular economy as it helps to reduce waste and maximize the lifespan of products. By repairing, reusing, refurbishing, and recycling these items, we can minimize the need for new resources and energy, while also reducing our environmental footprint.





# Bicycle & Motorbike



Riding a bike is an excellent way to reduce your carbon footprint and contribute to a circular economy.

Here are some ways in which biking can help:

- 1.Reducing carbon emissions: Biking is an eco-friendly way to travel as it does not require any fuel or emit any pollutants. By choosing to bike instead of driving a car, you can significantly reduce your carbon footprint.
- 2.Using renewable energy: Biking uses human power, which is a form of renewable energy. Unlike fossil fuels, which are finite and non-renewable, human energy can be replenished with proper nutrition and rest.
- 3.Promoting a circular economy: Biking also promotes a circular economy by reducing the demand for new products. For example, instead of buying a new car or using ride-hailing services, biking can be a sustainable alternative.
- 4.Supporting local economies: When you bike instead of driving, you're more likely to shop and support local businesses. This can help to strengthen local economies and reduce the carbon footprint associated with global supply chains.
- 5.Reducing waste: Biking can also reduce waste by minimizing the need for disposable products such as plastic water bottles or coffee cups.

In summary, biking is an eco-friendly and sustainable way to travel, reduce carbon emissions, support a circular economy, and reduce waste. By choosing to bike, you can make a positive impact on the environment and contribute to a more sustainable future



# LINK TO ACCESS MAP

<https://www.google.com/maps/d/u/o/viewer?mid=13hNotYdYSpHG86nOilpqOjOaCo3ZSoo&ll=21.110464461899554%2C96.40031305&z=6>



---

Notices: The map is a work in progress, and improvement and adjustments will come along the way. We encourage you to utilise it well and provide feedback

---



# DISCLAIMER:

This guidebook is provided to assist you in starting your journey to reduce your carbon footprint and promote local businesses that contribute to the circular economy. It is important to act as a responsible consumer by adopting the practice of refusing single-use plastics.



For instance, you can automatically decline the use of straws and politely refuse to be served in plastic cups. Instead, consider bringing your own water bottle or requesting a refill from a purified water source using a 20L bottle. To minimise waste from takeout meals, bring your own reusable containers. Additionally, avoid using single-use chopsticks and kindly decline any plastic utensils offered. Remember to say "no thank you" to plastics whenever possible.



## **ACTIONS THAT AN OFFICE AND EMPLOYEES CAN TAKE TO CREATE A SUSTAINABLE WORKPLACE:**

- Reduce paper usage by going digital, using double-sided printing, and recycling paper.

---

- Encourage carpooling, cycling, or using public transportation to reduce carbon emissions.

---

- Reduce energy usage by turning off lights and electronics when not in use and using energy-efficient appliances.

---

- Implement a recycling program for plastics, organic waste, paper, glass, and electronics.

---

- Use environmentally friendly cleaning products and reduce the use of disposable products.

---

- Encourage employees to bring their reusable water bottles, coffee mugs, and utensils to reduce waste.

---

- Implement sustainable procurement policies, such as purchasing eco-friendly office supplies and products.

---

- Offer incentives for sustainable behaviours, such as using public transportation or cycling to work.

---

- Educate employees on sustainability and encourage them to incorporate sustainable practices into their daily work routines.

---

- Participate in community sustainability events and initiatives to support sustainable practices beyond the workplace.

---



switchasia



## Prevent Plastics Myanmar



+95 9 45492 7732



info@preventplastics.org



<https://preventplastics.org>



PreventPlastics



prevent-plastics



Myanmar\_PP

This publication is produced by Prevent Plastics & Thant Myanmar with support from the EU-funded SWITCH-Asia Programme. The content and opinions expressed herein are those of the author(s) and do not necessarily reflect the position or policy of the EU or SWITCH-Asia, and no official endorsement should be inferred

©2023 Prevent Plastics. All rights reserved. Licensed to the European Union under conditions.

### Partners

